

Speaker **8 ohm**,
at least **3 watt**.

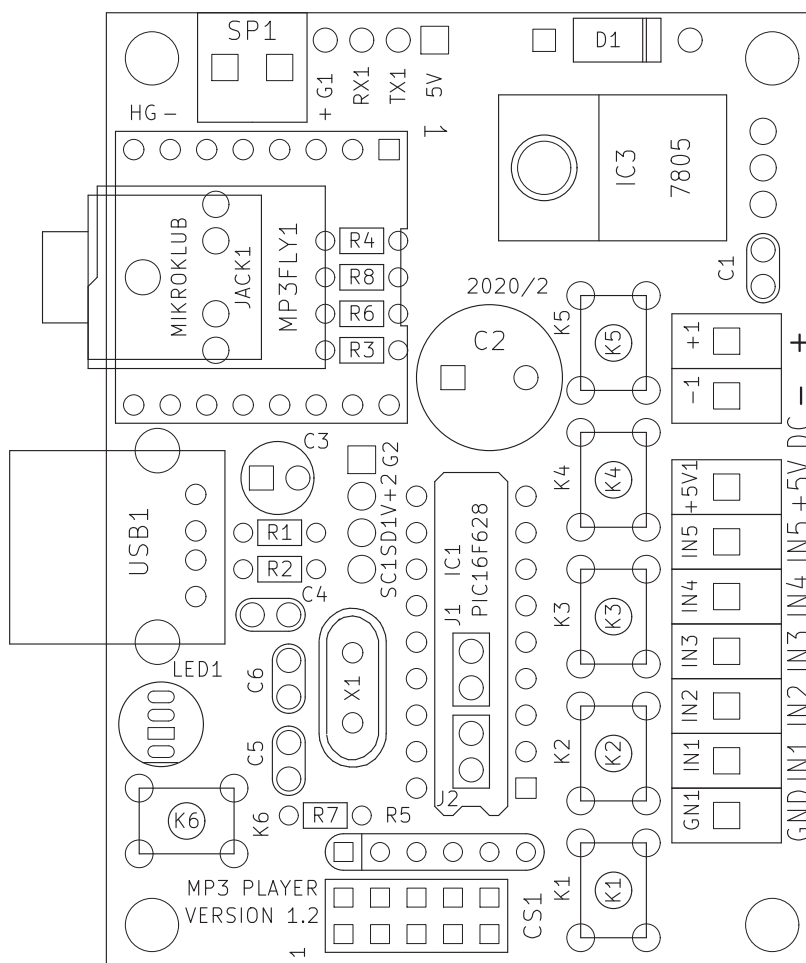
Important!

Do not change the speaker and power connection!

- +

SD Card:

\\mp3\\
0001.mp3
0002.mp3
0003.mp3
0004.mp3
0005.mp3



+ **POWER**
- (GND) **DC 9-15V/300mA**

To the starting inputs can be
attaching only 0-5 volts.
Or a "contact," between to the input and GND.
But do not connect to the inputs - IN1-5 - greater
than 5 volts. (12 volts, power supply, etc. !)

Voice volume setting:
+ : Hold down K6, and press the K1 button
- : Hold down K6, and press the K2 button

Play mode choice:
voice playing to ending/or restart:
K6 pressed + K3 pressed for 5 seconds